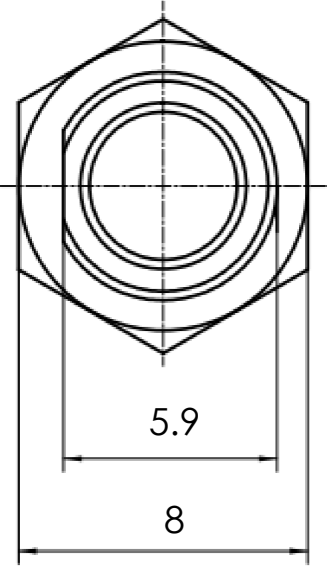
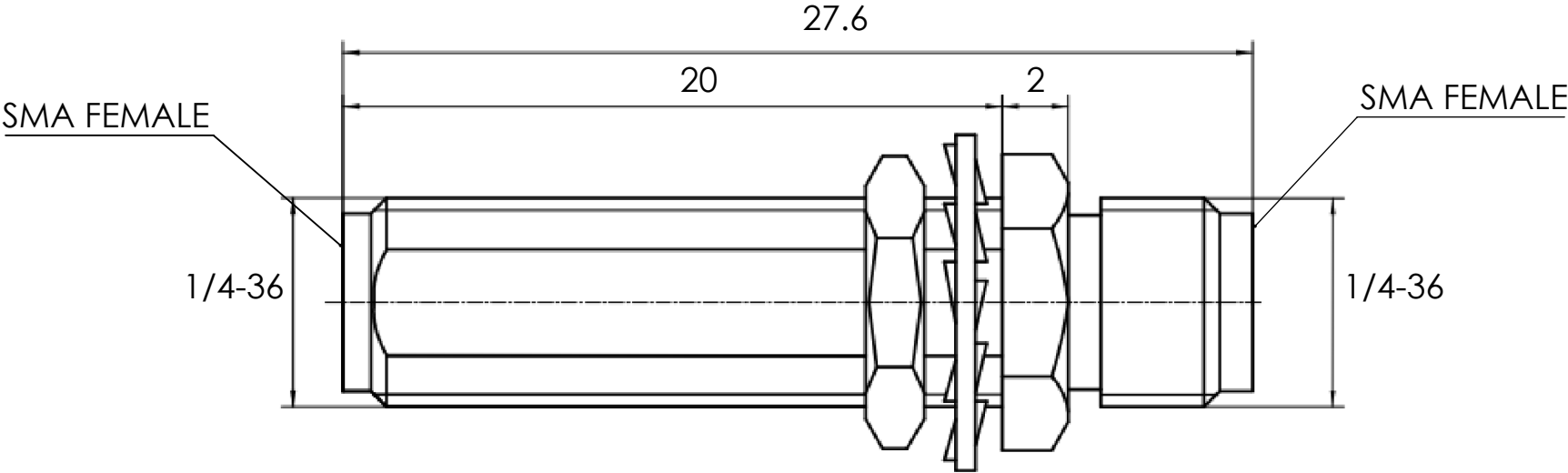
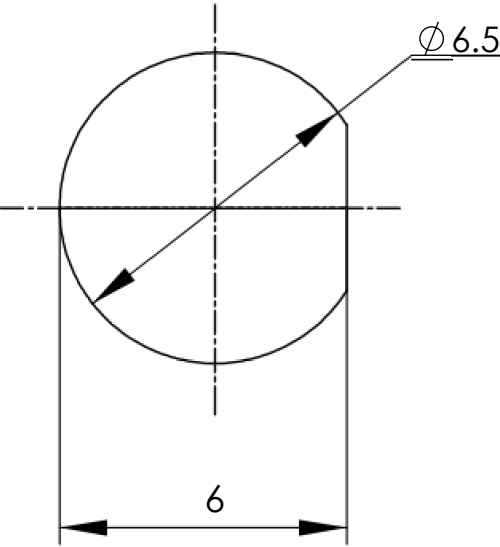


REVISIONS		
REV.	DESCRIPTION	DATE
1	INITIAL RELEASE	8/14/2025




1. ELECTRICAL:
- IMPEDENCE 50Ω
 - FREQUENCY DC - 18GHz
 - VSWR 1.20 : 1 MAX
2. MATERIAL:
- PIN: BERYLLIUM COPPER, GOLD PLATED
 - BODY: STAINLESS STEEL, PASSIVATED
 - INSULATOR: TEFLON
3. ENVIRONMENTAL:
- TEMPERATURE RANGE: -45°C~+85°C
 - MATING CYCLES: >500
 - RoHS COMPLIANT
4. INTERFACE STANDARD:
- MIL-STD-348A



PROPRIETARY AND CONFIDENTIAL

THE INFORMATION CONTAINED IN THIS DRAWING IS THE SOLE PROPERTY OF Coax Wizard. ANY REPRODUCTION IN PART OR AS A WHOLE WITHOUT THE WRITTEN PERMISSION OF Coax Wizard IS PROHIBITED.

UNLESS OTHERWISE SPECIFIED:		NAME	DATE	<div><div>COAX WIZARD</div></div> <div>coaxwizard.com</div>				
DIMENSIONS ARE IN MM		DRAWN	JX	08/14/25	TITLE: ADAPTER, SMA FEMALE, SMA FEMALE, STRAIGHT, BULKHEAD, L 20MM			
TOLERANCES:		CHECKED	TC	08/14/25				
ANGULAR: MACH ± 1°		ENG APPR.	QW	08/14/25				
BEND ± 1°		MFG APPR.						
INTEGER ± 3		Q.A.						
ONE PLACE DECIMAL ± 1.0		COMMENTS:		SIZE		PN. NO.	REV	
TWO PLACE DECIMAL ± 0.50					ADP-SMAF-SMAF-SB-20MM			1
INTERPRET GEOMETRIC TOLERANCING PER: ASME Y14.5		CUSTOMER OUTLINE DRAWING FOR REFERENCE ONLY		SCALE: 1:2		WEIGHT:	SHEET 1 OF 1	
MATERIAL								
FINISH								
NA								
NA								